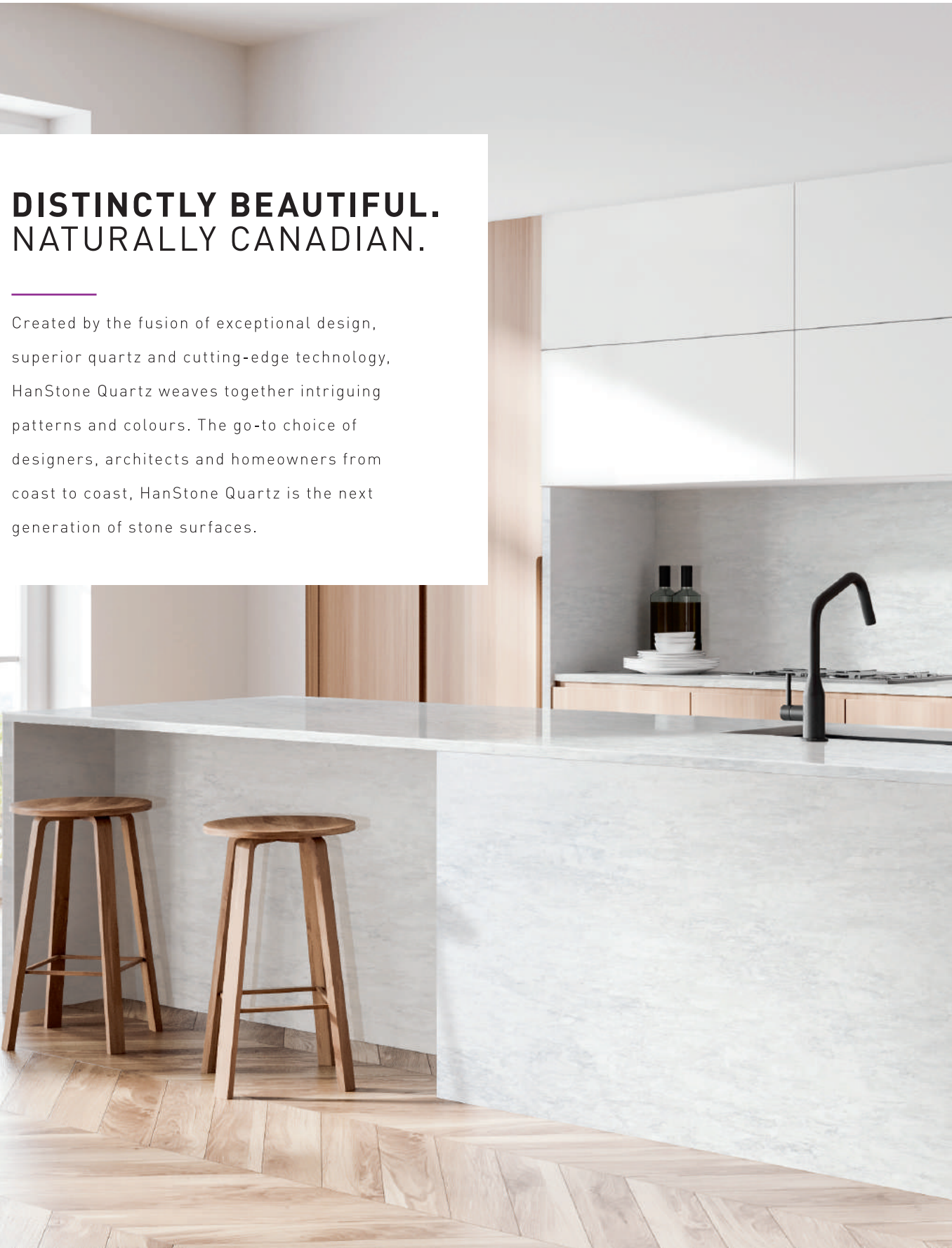




THE HANSTONE CANADA ADVANTAGE

- State-Of-The-Art Manufacturing Facility in London, Ontario Canada.
- Readily Available
- Premium Quality
- Jumbo-Sized Slabs
- Over 40 Colours
- Lifetime Residential Warranty
- 10 Year Commercial Warranty



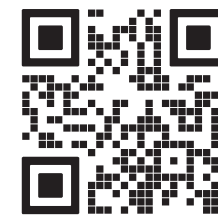
DISTINCTLY BEAUTIFUL. NATURALLY CANADIAN.

Created by the fusion of exceptional design, superior quartz and cutting-edge technology, HanStone Quartz weaves together intriguing patterns and colours. The go-to choice of designers, architects and homeowners from coast to coast, HanStone Quartz is the next generation of stone surfaces.

SO MANY REASONS TO LOVE HANSTONE QUARTZ

- NON-POROUS
- STAIN RESISTANT
- SCRATCH RESISTANT
- ETCH RESISTANT
- DURABLE
- ECO-FRIENDLY
- HEAT RESISTANT
- EASY TO MAINTAIN

WANT TO SEE HOW OUR QUARTZ SLABS ARE MADE



SEE MORE ONLINE AT WWW.HANSTONE.CA

CONNECT WITH US @HANSTONECA



HANSTONE CANADA
+1 844.331.2428 | INFO@HANSTONE.CA

SHOWROOMS & WAREHOUSES
LONDON | BURLINGTON | MONTRÉAL | CALGARY

HanStone is made from natural quartz. Variation in colour, shade and pattern is an inherent and natural characteristic of this product. A sample piece is a general representation based on a small, select cut of a full slab and does not indicate all design characteristics of the full slab or the final installed product. Colour blotches are intended and inherent part of design in many colours to enhance the overall natural aesthetics. Structural support is required for all applications. HanStone is not a seamless product; pattern and shade may vary where there are seams.

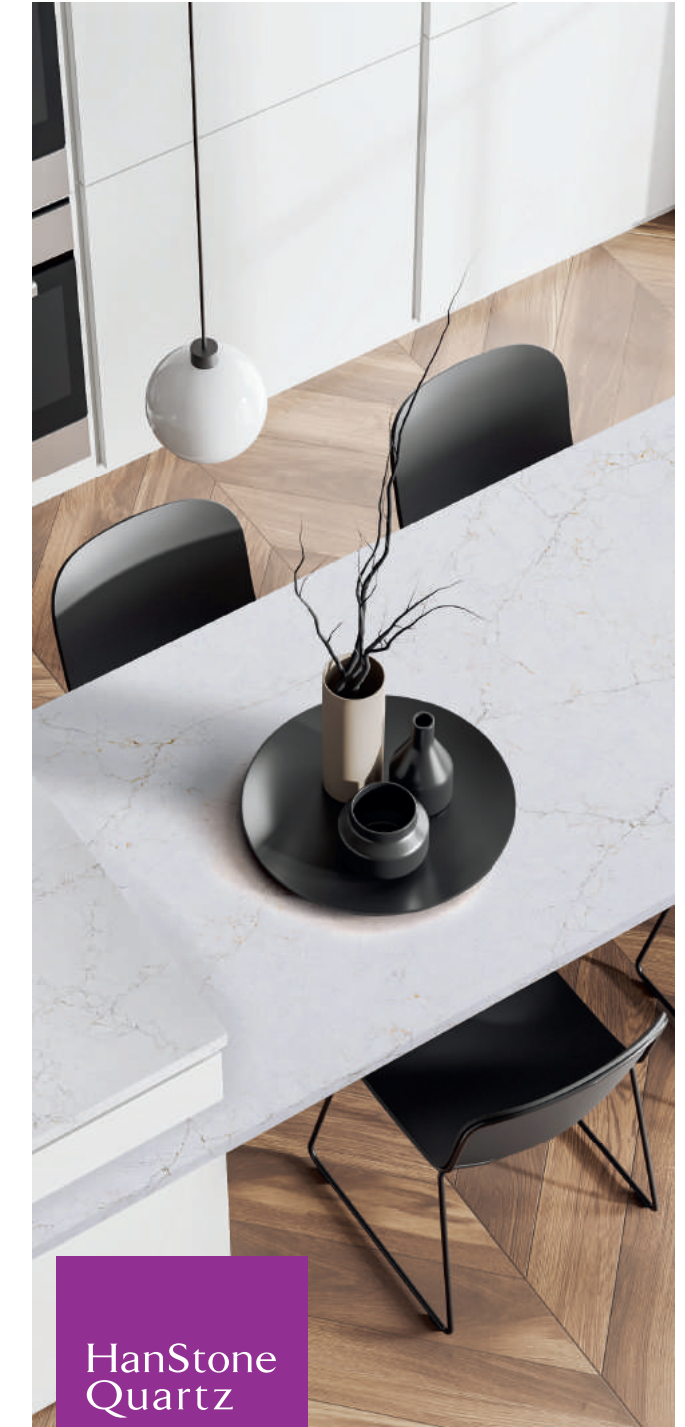
No stone or quartz surface is chip-proof, scratch-proof, stain-proof, heat-proof, or maintenance-free. Although HanStone is resistant to stains, this product will stain if not maintained properly. Although HanStone is durable, all stone can be damaged or chipped by force. Use of Acetone, Vim, any other harsh chemicals, or abrasives is strictly prohibited on HanStone, as it will damage the surface. This product may be damaged by sudden or constant change of temperature especially near the edges or direct heating of the surface with hot pots, pans, or other cooking units. Use of trivet or hot pad is always recommended. Due to the nature of design, texture and surface finish, certain colours with leathered, matte or river-washed finish will require more attention, care, and maintenance. HanStone manufacturer's warranty does NOT cover stains, marks, chips, scratches, damages from heat, impact, or chemicals. It is the owner's responsibility to keep the surface clean and well-maintained.

HanStone Canada is the manufacturer and supplier of the quartz slabs only and does not perform any design, fabrication, installation, renovation, or construction. All such labour or workmanship is performed by independent stone professionals or contractors. The stone professional must remove the protective film and inspect material prior to fabrication or installation. As such, HanStone manufacturer's warranty is strictly limited to its product only. HanStone is NOT responsible for and its warranty does NOT cover (1) any labour or workmanship whatsoever by 3rd party stone or design professionals or contractors; and (2) any other manufacturer's parts or products associated with the construction, renovation, fabrication, installation, repair, or replacement including, not limited to, plumbing, fixtures, sinks, appliances, cabinetry, electrical, etc.



MARCH 2024

COLOUR PORTFOLIO



HanStone Quartz

NATURALLY CANADIAN

NEW COLOURS



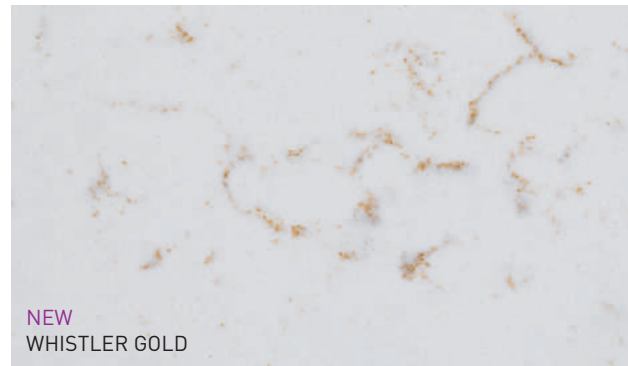
NEW
ANTELLO



NEW
EDEN*



NEW
TAHITIAN CREAM*



NEW
WHISTLER GOLD

COLOUR ON COVER: ANTELLO

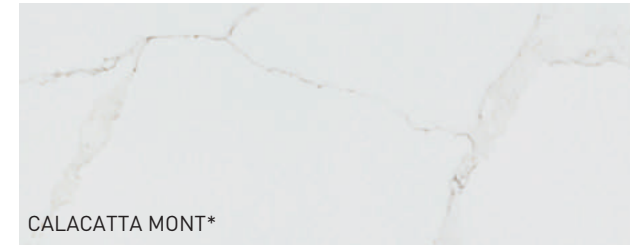
2023 COLLECTION



AURELIA



ODINA



CALACATTA MONT*



MATTERHORN*



LE BLANC*



ELBA WHITE*

BOUTIQUE COLLECTION



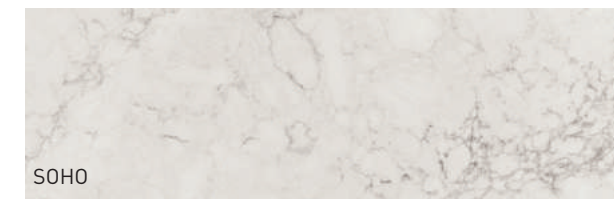
CHANTILLY



YORKVILLE



MONTAUK



SOHO

MODERN ANTIQUITY COLLECTION



CALACATTA GOLD*



CALACATTA VENATO

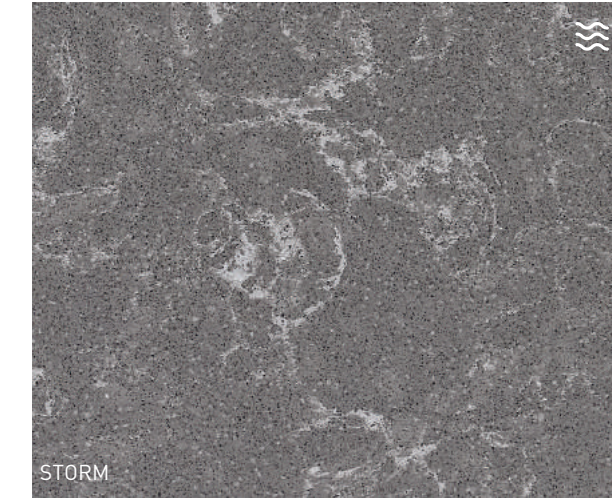


CALACATTA EXTRA*

UNEARTHED COLLECTION



COAST



STORM



RIVERWASHED
FINISH

HanStone's Riverwashed series features the unique appearance and matte texture of natural stone refined by the flow of river water. This distinctive design renders a matte finish with a subtle texture, rather than a glossy polished finish. For this reason, you should clean your Riverwashed countertops on a regular basis to keep the finish looking new.

Any contact with grease and oil from cooking or the natural oil in fingerprints may give the countertop a non-uniform appearance. Such an appearance is an inherent and natural part of matte finished surfaces. For oil and grease removal, use a product that cuts grease such as mild soap and water, Dawn® Platinum Powerwash, or Simple Green® All-Purpose Cleaner.

For surface finish with less maintenance, consider selecting a polished HanStone colour instead. For example, for a polished design similar to "Storm" Riverwashed, we recommend "Embrace".

COLOUR PORTFOLIO



TOFINO



ROCKY SHORES



BLACKBURN



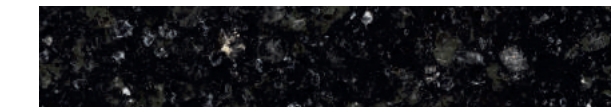
LEADEN



ASPEN



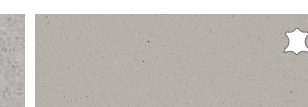
UPTOWN GREY



BLACK CORAL



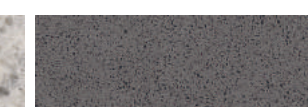
METROPOLITAN



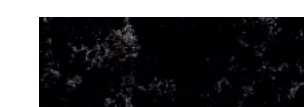
ARTISAN GREY



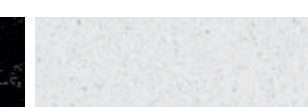
FUSION



ARAMIS



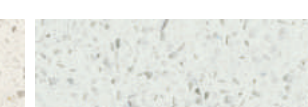
SILHOUETTE



DRIFT*



SWAN COTTON



SPECCHIO WHITE



WHISTLER



RIDGE



WALNUT LUSTER



INDIAN PEARL



ITALIAN WAVES



KINDRED



SERENITY



MERCER



BRAVA MARFIL



OCEANA



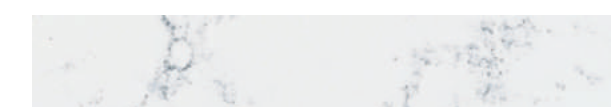
AURA



EMPRESS



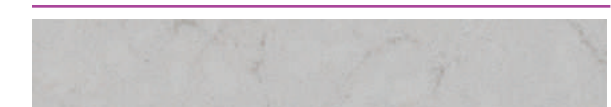
ROYALE BLANC*



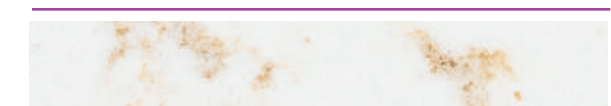
TRANQUILITY



EMBRACE



AWAKEN



STRATO



LEATHER
FINISH

*= Import

All colours available in Jumbo size (130"x65") only unless marked. Colours are representative and will vary slightly from the actual product.